

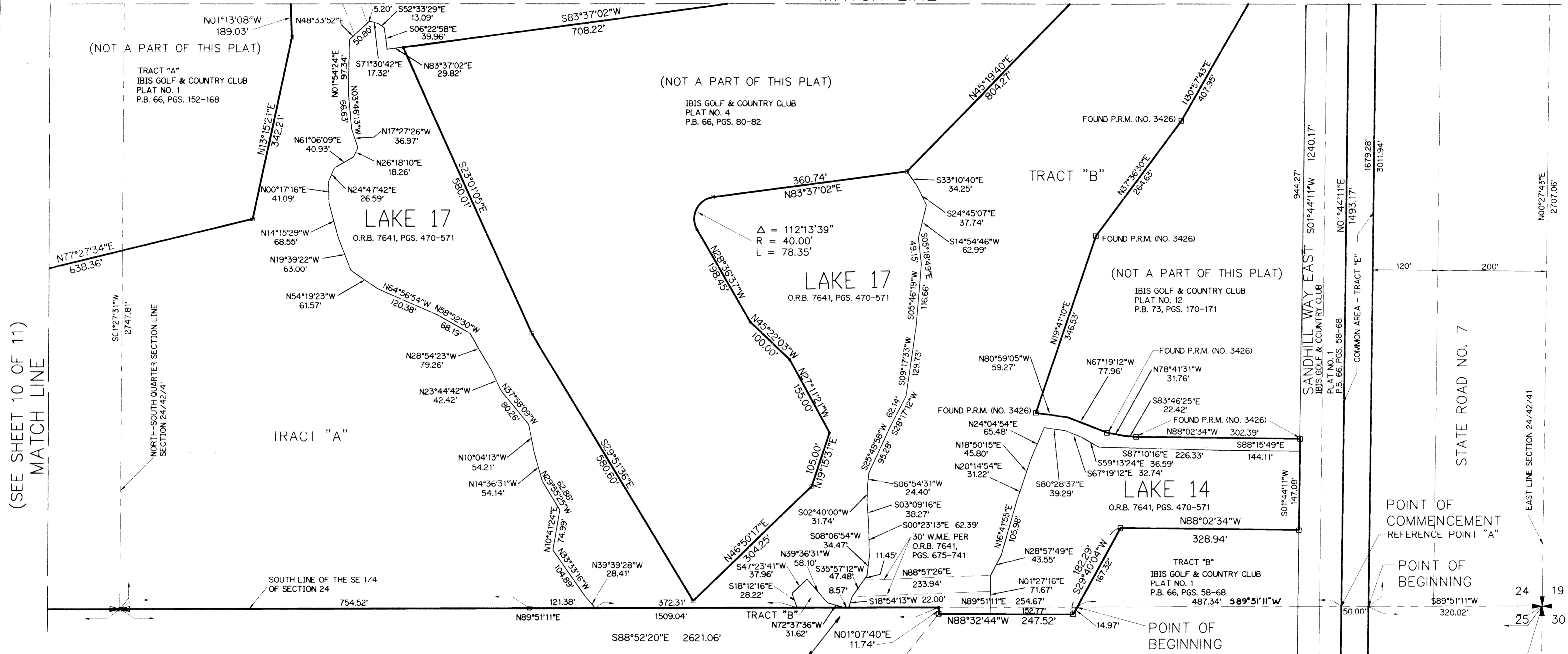


IBIS GOLF AND COUNTRY CLUB PLAT NO. 14

117

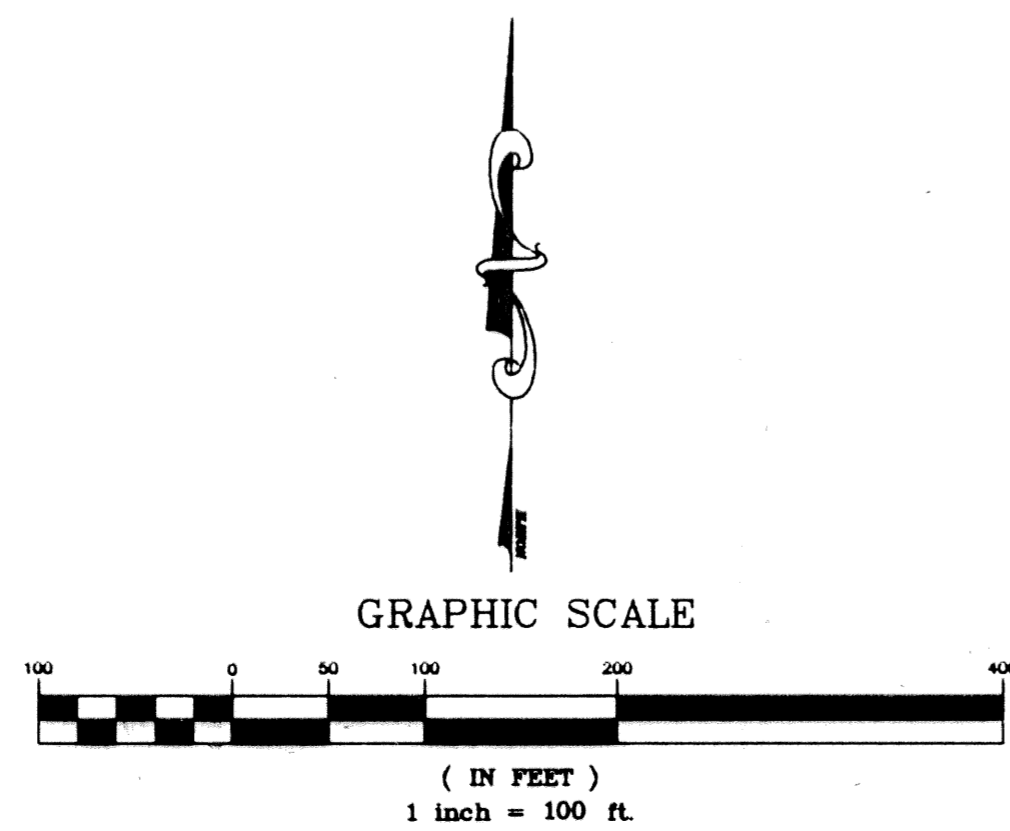
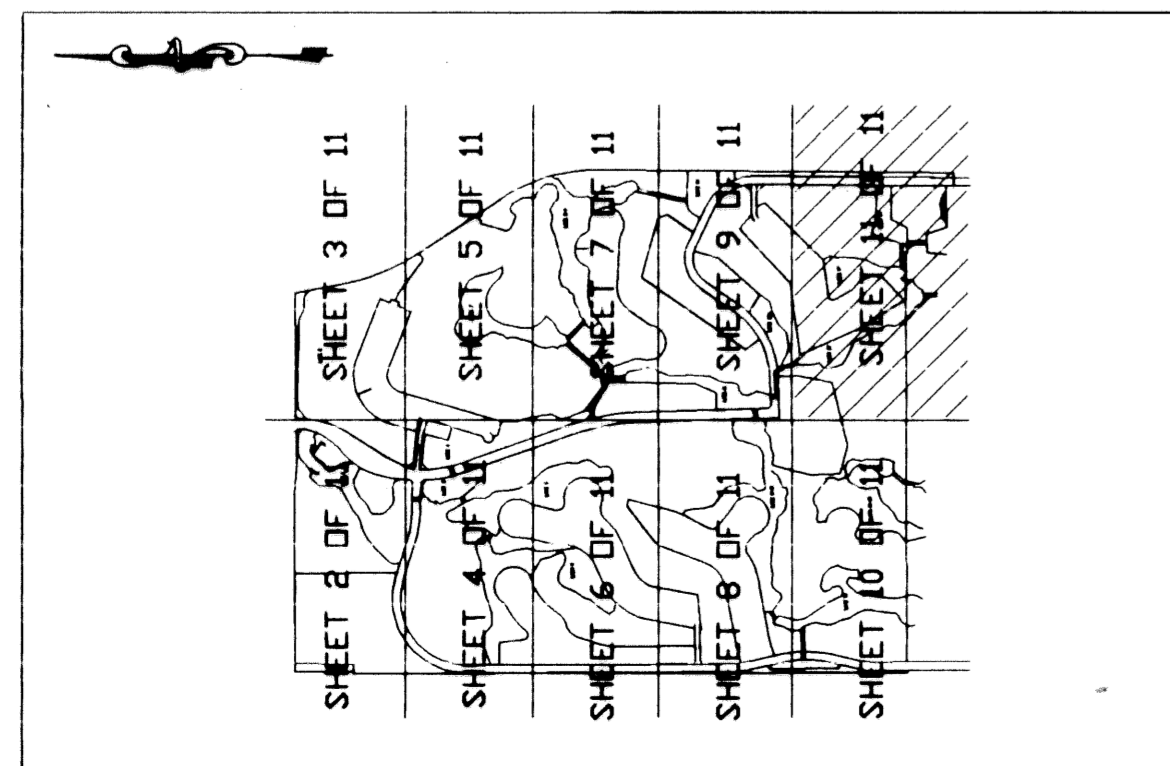
A PLANNED UNIT DEVELOPMENT
LYING IN SECTIONS 13, 24 AND 25, TOWNSHIP 42 SOUTH, RANGE 41 EAST
CITY OF WEST PALM BEACH, PALM BEACH COUNTY, FLORIDA

(SEE SHEET 9 OF 11)
MATCH LINE



(SEE SHEET 10 OF 11)
MATCH LINE

KEY MAP (NOT TO SCALE)



- LEGEND:
- O.R.B. - OFFICIAL RECORD BOOK
 - P.B. - PLAT BOOK
 - PGS. - PAGES
 - W.M.E. - WATER MANAGEMENT EASEMENT
 - - PERMANENT REFERENCE MONUMENT FOUND NO. LB 959
 - - PERMANENT REFERENCE MONUMENT SET NO. LS 4382
 - ⊕ - SECTION CORNER
 - ⊙ - ONE-QUARTER SECTION CORNER

IBIS GOLF & COUNTRY CLUB
PLAT NO. 7
P.B. 67, PGS. 152-168



LINDAHL, BROWNING, FERRARI, & HELLSTROM, INC.
CONSULTING ENGINEERS, PLANNERS & SURVEYORS

210 JUPITER LAKES BLVD. SUITE 200 JUPITER, FL 33458
2400 S.E. MONTEREY ROAD SUITE 200 FT. PIERCE, FL 34950
2222 COLONIAL ROAD SUITE 702 WEST PALM BEACH, FL 33409
2000 PALM BEACH LAKES BLVD. SUITE 702 WEST PALM BEACH, FL 33409

1111
Sheet of

Subdivision: Ibis Golf And Country Club Plat 14 Page 117
Book: 75
Flood Zone: FLOOD MAP #
Quadrant: SE
Zip Code: 33409
PUD Name: C/West Palm Beach
Date: 13/24/25/42/41